

CONTENTS

Before starting the installation, ensure that all components listed below are supplied:

- 1x ES6000 main body with wires connected
- 1x ES6000 roller strike
- 1x screw kit
- 1x lock mounting kit
- 1x warranty information
- 1x installation instructions
- 1x strike template (Surface mount version only)

AVAILABLE MOUNTING KITS AND SPARE PARTS

Additional accessories are available for optional mounting and spare parts (not supplied):

- 220600-503 Roller strike kit

IMPORTANT SAFETY INSTRUCTIONS AND WARNINGS

1. Read and follow all instructions prior to installing and using this product.
2. These instructions or a full copy of these instructions should be provided to the user.
3. These instructions should be kept by the end user for future reference.
4. Obey and heed all warnings on the product and in the manual.
5. Ensure the functionality, specification and configuration of the ES6000 electric Hook Lock is befitting for the intended application and environment. This may include in the event of a power failure and the ability to exit any building access point in an emergency.
6. Do not use this unit near excess water or moisture not typical to natural rainfall and installation practices i.e., installed in a door frame/enclosure.
7. Do not use this unit in environments with excessive in-air dust that could accumulate and prevent correct operation.
8. Avoid prolonged exposure to direct sunlight or heat.
9. This product is not suitable for environments with explosive or flammable atmospheres.
10. Only use attachments, accessories and fixings as specified by the manufacturer.
11. Clean with a dry cloth only, do not use chemicals.
12. Refer all servicing to qualified service personnel. Servicing or replacement is required when the unit has been damaged. This may include either mechanical or electrical issues. This may also include ingress of liquid spilled or objects which have fallen into the unit or if the unit has been exposed to excessive rain or moisture and no longer operates normally. Do not attempt to service this product yourself.
13. Opening or removing covers may expose you to dangerous voltages or other hazards.
14. To prevent risk of fire or electric shock ensure the power supply or system is suitable for this product in addition to any other units already sharing the same power supply or system.
15. Do not let objects or liquids enter the product as they may prevent correct operation, possibly preventing door access or short-out parts that could result in a fire or electric shock.
16. Modification of this product in any way may affect both its functionality and compliance status and will void any warranty and claim to compliance, ratings or performance.
17. Ensure the correct power supply is connected.
DO NOT connect AC mains power to this product.

IMPORTANT INSTALLATION AND FIXING INSTRUCTIONS

1. Ensure the electric Hook Lock meets your physical (dimensions), grade/rating and electrical specification before going any further. It is recommended to verify that the door & door frame construction allows the use of the device.
2. Before fitting the electric lock to a fire/smoke resisting door, the fire certification should be examined to ensure the suitability of the electric lock for that door assembly.
3. Before fitting this product, the door should be checked to ensure correct hanging and freedom from binding.
4. The electric lock shall be installed using the specified fasteners and instructions for the door type and installation the electric lock is designed for.
5. This product is designed for timber or metal door frames.
6. This electric lock cannot be used on double action (double swing) doors.
7. Care shall be taken to ensure that any seal or weather-stripping fitted to the complete assembly, does not inhibit the correct operations of the electric lock.
8. Fixing instructions must be carefully followed during installation. The instructions and any maintenance instructions must be passed on by the installer to the user.
9. The bolt heads and keepers must be fitted to provide secure engagement. Care shall be taken to ensure that no projection of the bolt heads, when in the withdrawn position, interfere with the operation of the electric Hook Lock, door fitment, or prevent the door from swinging freely.
10. The electric Hook Lock is not suitable for rebated meeting stiles.
11. All components specified for the intended installation shall be fitted to ensure compliance.
12. It is important to follow the instructions precisely to ensure the lock and strike plate are correctly positioned.

Note: Our Hook Lock will provide a high degree of safety and reasonable security provided it is fitted to door frames that are suitable and in good condition.

INSTALLATION INSTRUCTIONS

DRAWINGS NOT TO SCALE. INFORMATION IN THIS DATASHEET MAY BE CHANGED WITHOUT NOTICE.

IMPORTANT NOTE: Ensure any rebate strips or door stops are fitted before proceeding. Hook Lock must NOT be used as the only form of door stop.

This product has been designed for use in weather protected areas, and is NOT suitable for use in hazardous (flammable or explosive) atmospheres.

Do NOT attempt to change the locking mode as the unit has been factory set for maximum product reliability.

The Hook Lock can be mounted both vertically and horizontally.

Solenoid leads colour

Red
Black

Supply voltage

12-24VDC
Ground (0V)

Always ensure the correct transformer and cable guide is specified and used.

Electrical specifications	
Voltage supply	12VDC to 24VDC
Current draw	12VDC, 250mA after 1 sec. (initial current 830mA)
	24VDC, 140mA after 1 sec. (initial current 530mA)
Operation temperature	-20°C to +60°C @ 90% RH

Circuit protection: Reverse polarity and back EMF protection. Solenoid is continuously rated. Unit is factory tested to 12-30VDC.

CAUTION! Incorrect supply voltage may cause damage not covered by warranty.

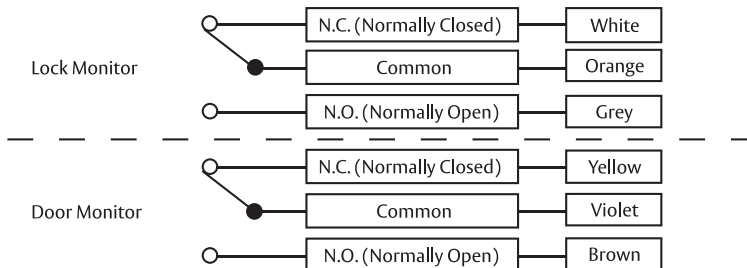
Please check supply voltage with a suitable meter to ensure voltage is within $\pm 15\%$ of nominal voltage of 12VDC to 24VDC with the strike powered.

This product has been designed for use in weather protected areas only.

DO NOT OIL OR LUBRICATE.

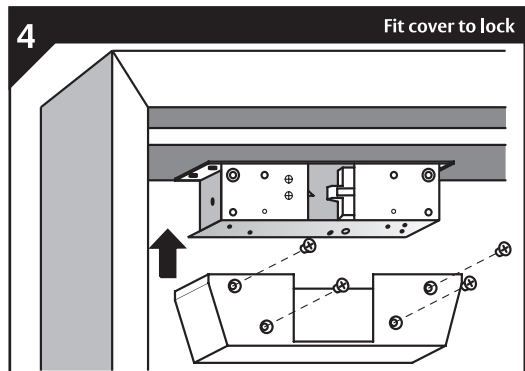
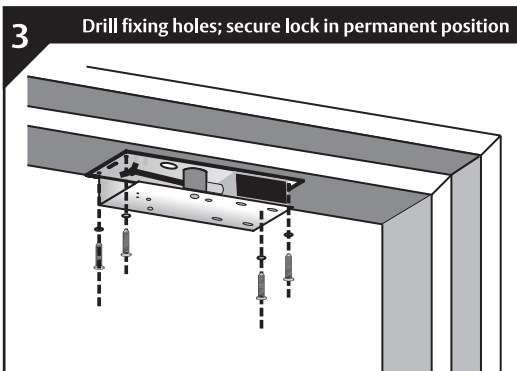
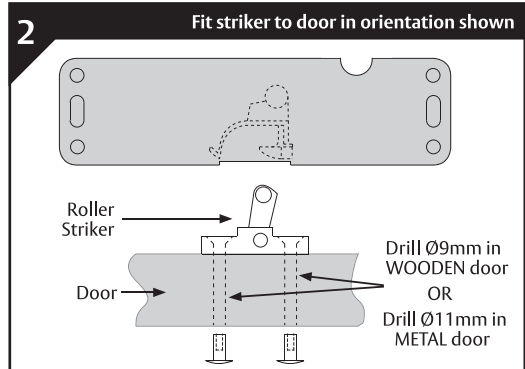
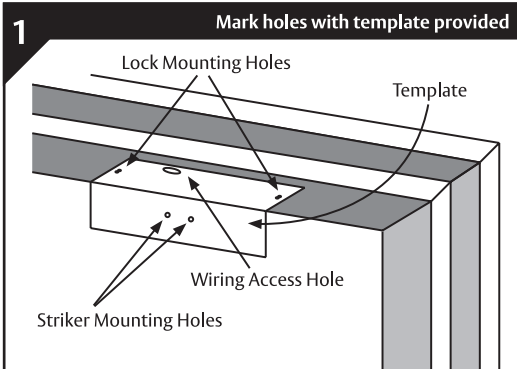
WIRING NOTES

The 6000 Series Hook Lock is fitted with a UL approved changeover microswitch (max. rating: 125 VAC, 3 A / 60 VDC, 200 mA) to monitor the latch and lock status. The wiring diagram for the monitoring schematic is shown below and on the back of the lock.

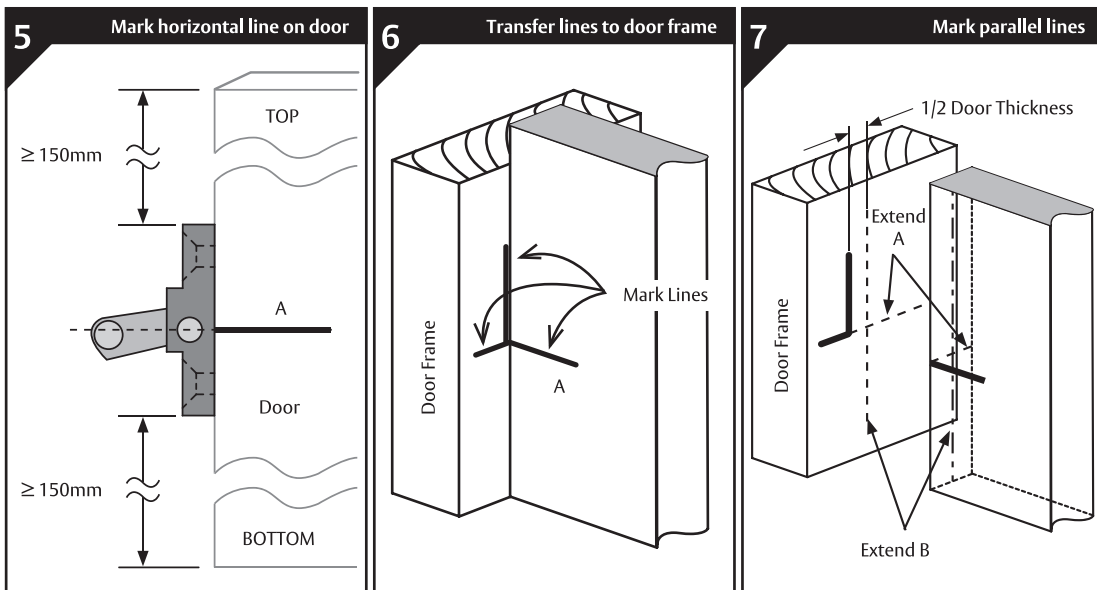


Cable gauge requirements					
Distance	Cable cross section	American wire gauge	Distance	Cable cross section	American wire gauge
5m	0.33mm ²	AWG22	20m	1.31mm ²	AWG16
10m	0.65mm ²	AWG19	30m	1.63mm ²	AWG14
15m	1.04mm ²	AWG17	50m	2.05mm ²	AWG12

1. Remove cover screws and cover from Hook Lock.
2. Use cardboard template supplied to mark the position of two elongated lock mounting holes in the door frame, wiring access hole, and two mounting holes for the striker on the door (see Fig. 1).
3. Using the wiring diagram provided on the lock body or the datasheet, ensure all wiring is correctly connected and not rubbing on sharp edges or interfering with any lock mechanism.
4. Using only the two elongated holes in the lock body, fix the Hook Lock to the door frame using the 6G self tapping screws and washer provided. Ensure that the lock hook is facing the door.
5. Fix striker to door as per orientation shown in Fig. 2. Use Ø9mm mounting holes for wooden doors; Ø11mm mounting holes for metal doors.
6. Allow the door closer to latch the lock by first holding the door with the striker resting on the lock hook, and then releasing it. Adjust the lock position until the striker engages the Hook Lock repeatedly with assistance.
7. Check the Hook Lock functions with power supplied. The lock should still latch freely under minimum closer force.
8. Mark and drill the remaining four fixing holes for the lock before securing the lock in its permanent position (see Fig. 3).
9. Fit cover to the lock body, then recheck that the door opens and closes smoothly (see Fig. 4). Ensure that wiring is not trapped or pinched by the cover.

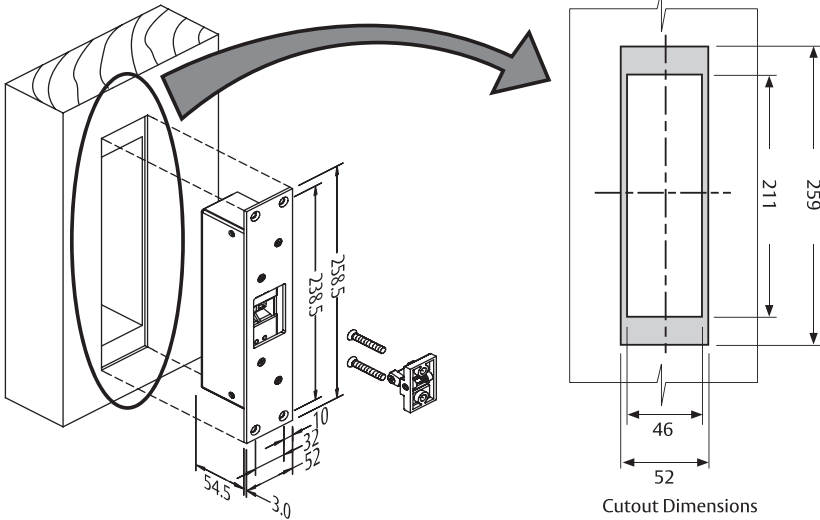


1. Place the roller striker at a desired position along the edge of the door. Measure half the height of the striker and mark a horizontal line (A) on the side of the door (see Fig. 5). Note that the striker must NOT be placed within 150mm from the top or bottom of the door.
2. Remove striker, then close the door and transfer the horizontal line (A) to the door frame. Also mark a vertical line on the door frame corresponding to one face of the door (see Fig. 6).
3. Open the door, then mark on both the door and frame 2 lines (B) that are parallel to the vertical line, at a distance equal to half the thickness of the door (see Fig. 7).
4. Extend lines A and B on the door and frame until they intersect. The 2 lines on the door frame are the centrelines of the cutout.
5. Measure and mark the cutout onto the door frame, then route out opening (see Fig. 8).
6. Using the wiring diagram provided on lock body or datasheet, ensure all wiring is correctly connected and not rubbing on sharp edges.
7. Install Hook Lock into door frame cavity and secure with mounting screws provided.
8. Mortice roller striker into door if necessary, using the striker body as a template. Secure striker to door, ensuring that the striker fixing holes are inline with the marked vertical centreline, and in the orientation as per Fig. 2.
9. Gently close door to check for correct alignment of striker when it engages the lock. A minimum of 1mm "door rattle" should be allowed.
10. Open and close door repeatedly to check for correct operation of all functions.



8

Mark cutout and route opening



MAINTENANCE, STORAGE, AND DISPOSAL

MAINTENANCE

Clean the external surfaces with a dry cloth only, do not use chemicals.

FAULTS, REPAIRS & RETURNS

This product contains no user serviceable parts. Please contact your local supplier.

STORAGE AND TRANSPORT

The product should be transported and stored in its original packaging.

DISMANTLE & ENVIRONMENT

Dispose of packaging and product in a responsible manner, this may include recycling at your nearest recycling centre. Including the re-use and recycling of the materials & packaging of this product. Contact your local authority to find the nearest electrical and electronic equipment waste disposal point. This product must not be disposed of with regular household waste.

EU CE DECLARATION OF CONFORMITY (DoC)

Hereby, ASSA ABLOY Australia Pty Ltd declares that the ES6000 electric Hook Lock is in compliance with the CE Directives including the Electromagnetic Compatibility (EMC) directive, Restriction of Hazardous Substances (RoHS) directive & Registration, Evaluation, Authorisation and Restriction of Chemicals (REACH) Regulation.

The full text of the EU declaration of conformity is available at
www.trimec.com.au/au/en/products/electromechanical-bolts/trimec-es6000-hook-lock



UKCA DECLARATION OF CONFORMITY (DoC)

Hereby, ASSA ABLOY Australia Pty Ltd declares that the ES6000 electric Hook Lock is in compliance with the United Kingdom (UK) legislations including the Electromagnetic Compatibility, Restriction of the Use of Certain Hazardous Substances in Electrical and Electronic Equipment & the Registration, Evaluation, Authorisation and Restriction of Chemicals (REACH) Regulations.

The full text of the UKCA declaration of conformity is available at
www.trimec.com.au/au/en/products/electromechanical-bolts/trimec-es6000-hook-lock



RCM Australia & New Zealand

Hereby, ASSA ABLOY Australia Pty Ltd declares that the ES6000 electric Hook Lock is in compliance with the Regulatory Compliance Mark (RCM) for Australia and New Zealand.

Manufacturer details

ASSA ABLOY Australia Pty Ltd.
235 Huntingdale Road, Melbourne
Victoria, 3166, Australia
Phone: 1300 LOCK UP (1300 562 587)
www.assaabloyopeningsolutions.com.au

UK Representative

ASSA ABLOY Opening Solutions
School Street, Willenhall, West Midlands
WV13 3PW, United Kingdom
www.assaabloyopeningsolutions.com.uk

